



GMT MONTHLY MEMBERSHIP PROGRESS REPORT

Results as of: 5/31/2020

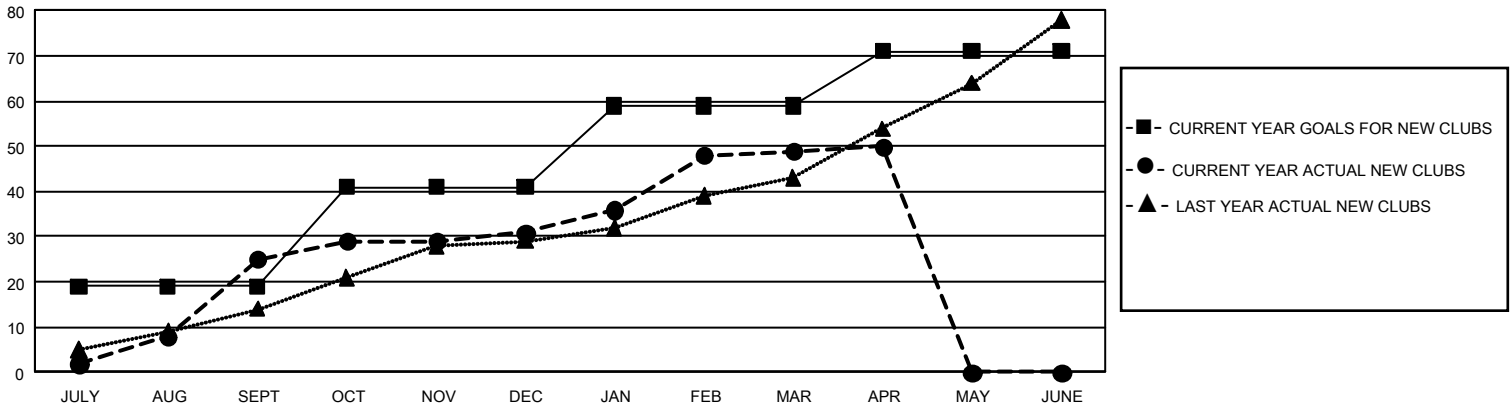
GAT Constitutional Area 5 - English Speaking Areas

REPORT DOES NOT INCLUDE CLUBS IN UNDISTRICTED AREAS.

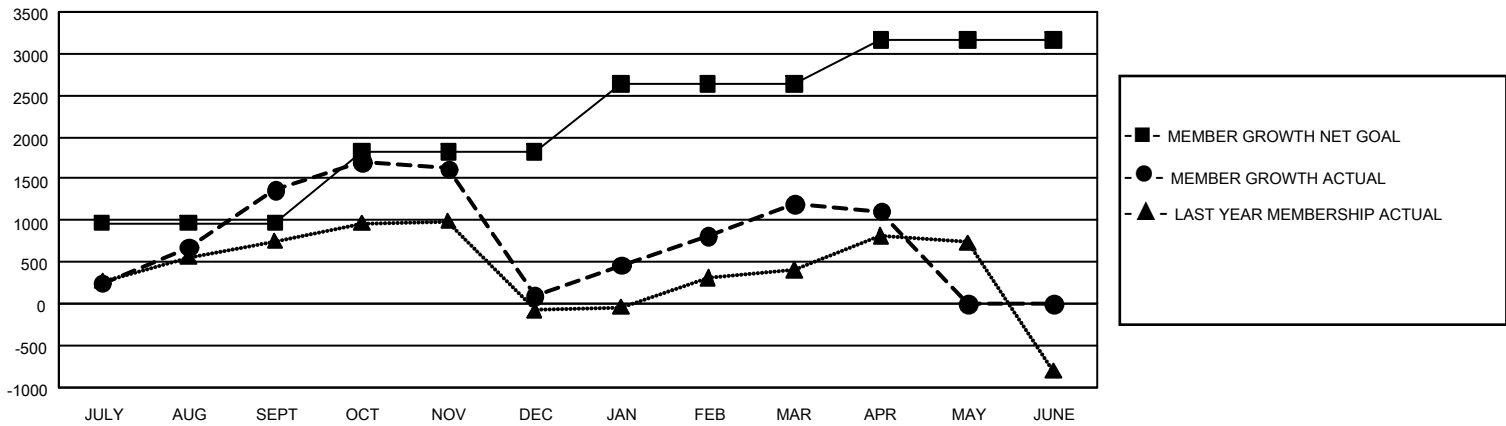
| Clubs | | | |
|-----------------------|---------------|-----------|---------------|
| RESULTS FOR 2019-2020 | | | |
| QUARTER | NEW CLUB GOAL | NEW CLUBS | DROPPED CLUBS |
| JULY/AUG/SEPT | 57 | 25 | 13 |
| OCT/NOV/DEC | 66 | 6 | 23 |
| JAN/FEB/MAR | 54 | 18 | 9 |
| APR/MAY/JUNE | 36 | 1 | 0 |

| Members | | | |
|-----------------------|------------------------|----------------------|---|
| RESULTS FOR 2019-2020 | | | |
| QUARTER | MEMBER GROWTH NET GOAL | MEMBER GROWTH ACTUAL | DROPPED MEMBERS ACTUAL (including transfers) |
| JULY/AUG/SEPT | 2,895 | 2,488 | 959 |
| OCT/NOV/DEC | 2,580 | 1,094 | 2,278 |
| JAN/FEB/MAR | 2,445 | 2,181 | 624 |
| APR/MAY/JUNE | 1,575 | 142 | 189 |

GOALS AND ACTUAL NEW CLUBS CUMULATIVE



GOALS AND ACTUAL MEMBERS CUMULATIVE



| | | |
|---|---|--|
| DROPPED CLUBS: 45 | 713 CLUBS OF 1,208 ADDED 1 OR MORE NEW MEMBERS | GENDER DISTRIBUTION MALE 20,682 (56.61%) FEMALE 15,852 (43.39%) |
| DROPPED MEMBERS DECEASED 91 CLUB CANCELLED 882 OTHER 3,072 TOTAL 4,045 | CLICK HERE FOR CUMULATIVE MEMBERSHIP DATA | TOTAL FAMILY UNIT MEMBERS 7,765 FAMILY MEMBERS PAYING HALF DUES 4,664 |